

Televic Education

How to use self-study mode with interpreterQ



interpreterQ
Reliable interaction.

Table of contents

- Table of contents2
- 1 How to use self-study mode with InterpreterQ.....3
 - 1.1 About 3
 - 1.2 How to use self-study mode without interpreter 4

1 How to use self-study mode with InterpreterQ

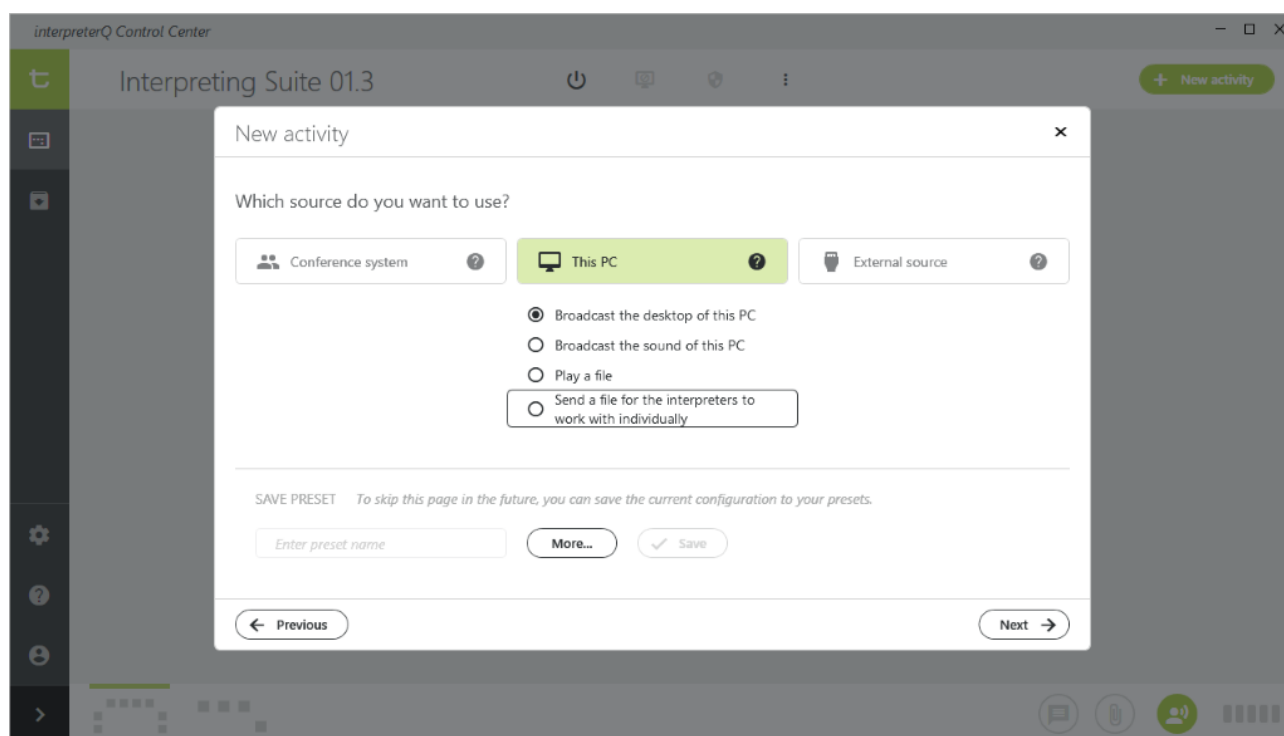
1.1 About

The most common workflow when using a conference system for interpreter training is to stream a live or pre-recorded speech on the conference floor, which is then interpreted by the students in the booths.

Note: this workflow is described in detail in the manual “How to use speeches in interpreterQ”.

However, it is sometimes desirable to give the students some time to practice on their own, and at their own pace. One of the source types in interpreterQ is specifically aimed at this scenario. As it might be somewhat hidden between the other source types, we want to describe it separately in this mini manual.

For student self-study you can select the option “Send a file for the interpreters to work with individually”.

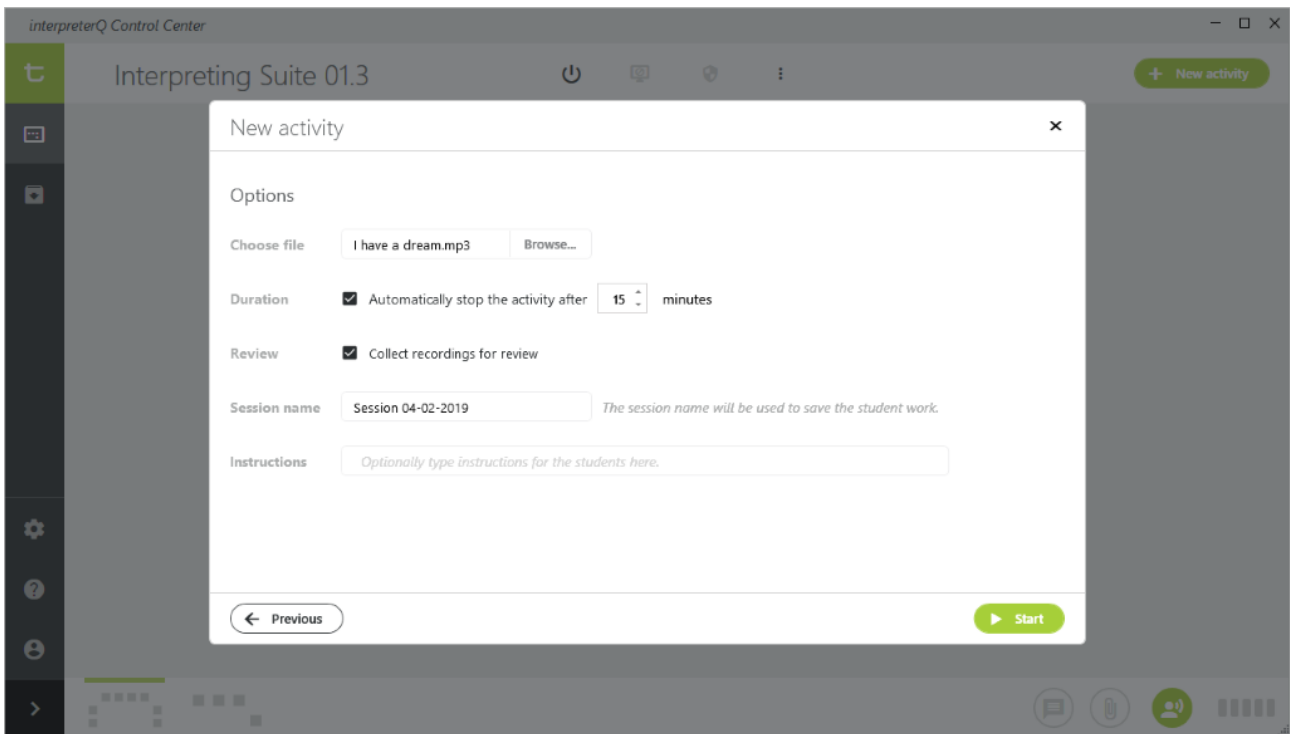


The difference between “playing” and “sending” a file is essential here:

- When you **play** a pre-recorded speech, you are simulating a conference situation with someone giving a speech to an audience. The students hear the speech and can translate it, but they have no control over it: they cannot pause the speech or repeat a fragment. As teacher you do have that possibility when using a media file: after selecting the file, it opens in a media player on the left side of the screen, and you can jump to a certain point prior to starting the interpreting exercise, or you can pause the playback at any point during the exercise, just as if a live speaker would take a short break during his speech.

- When you **send** a pre-recorded speech to the booths, the system does not start an audio stream on the conference floor, but instead it actually sends a copy of the media file to each of the booths. This file opens on the booth computers in the interpreterQ media player/recorder, and students can listen to the speech and do a (simultaneous or consecutive) interpretation. They are in full control over the speech source: they can replay the file, redo their own recording, or record another take for a certain fragment. They are using the system in “self-study” mode.

In the options screen below you will notice one extra option, only available in a self-study context:



If you wish you can specify how long students can practise on the transmitted speech file. After the specified time, the media player on the booth PCs will automatically close, the student work will be saved, and (if this option was selected) the results will be collected to the teacher PC.

1.2 How to use self-study mode without interpreter

Some universities allow the students to access the interpreter training facilities for self-study, even when no teacher is present. In that case the Interpreter Control Center is not used to send a speech file to all booth PCs and open it in the media player/recorder. Instead, the students enter a booth, log in on the PC, and open the media recorder through a shortcut on the PC desktop. They can bring their own study material and practise their interpretation skills on those recordings at own pace.

The students need to be aware of one important topic when they want to use the conference system in self practice mode: by default the students will listen to the conference floor through their interpreter desk headsets. However in self-practice mode they want to listen to the sound of the booth PC instead. They can easily select booth PC sound by clicking the relay button labeled “PC” on their interpreter desk. It is the 6th relay button:



Remark: when using the Interpreter Control Center, the software will automatically switch all interpreter desks to this “relay 6” in order to activate booth PC sound when launching a self-practice activity – the students don’t need to select this themselves. Only when no teacher is present, they will need to know how to activate the PC sound in their booth.