

Televic Education

How to create activity presets in interpreterQ



interpreterQ
Reliable interaction.

televic
education

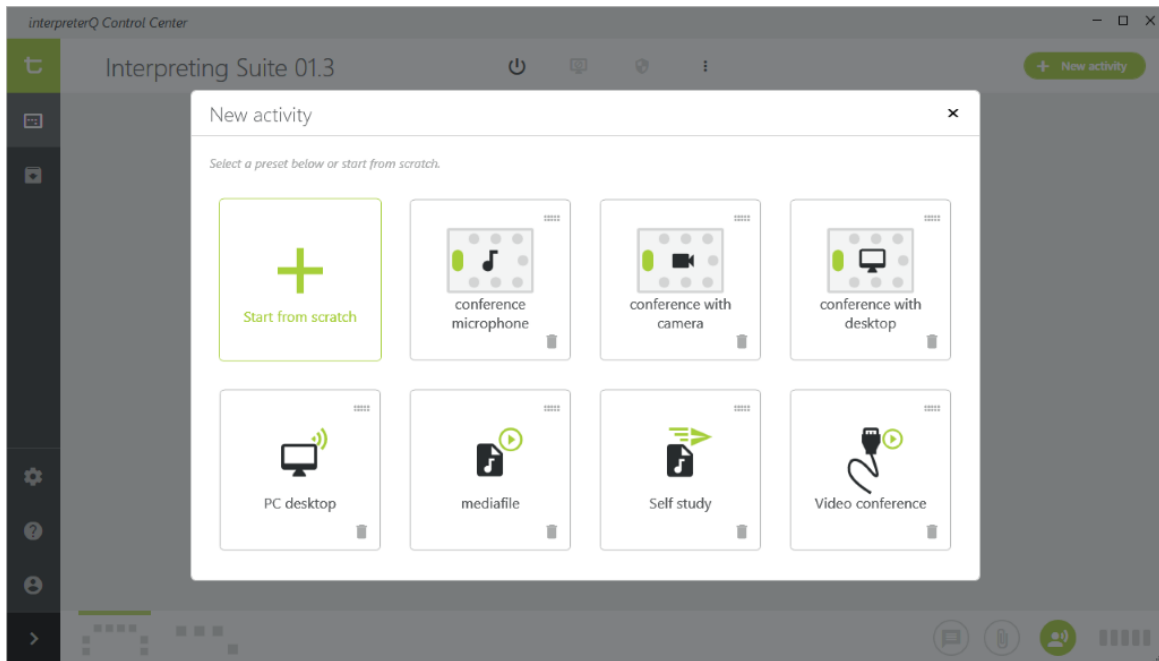
Table of contents

Table of contents2

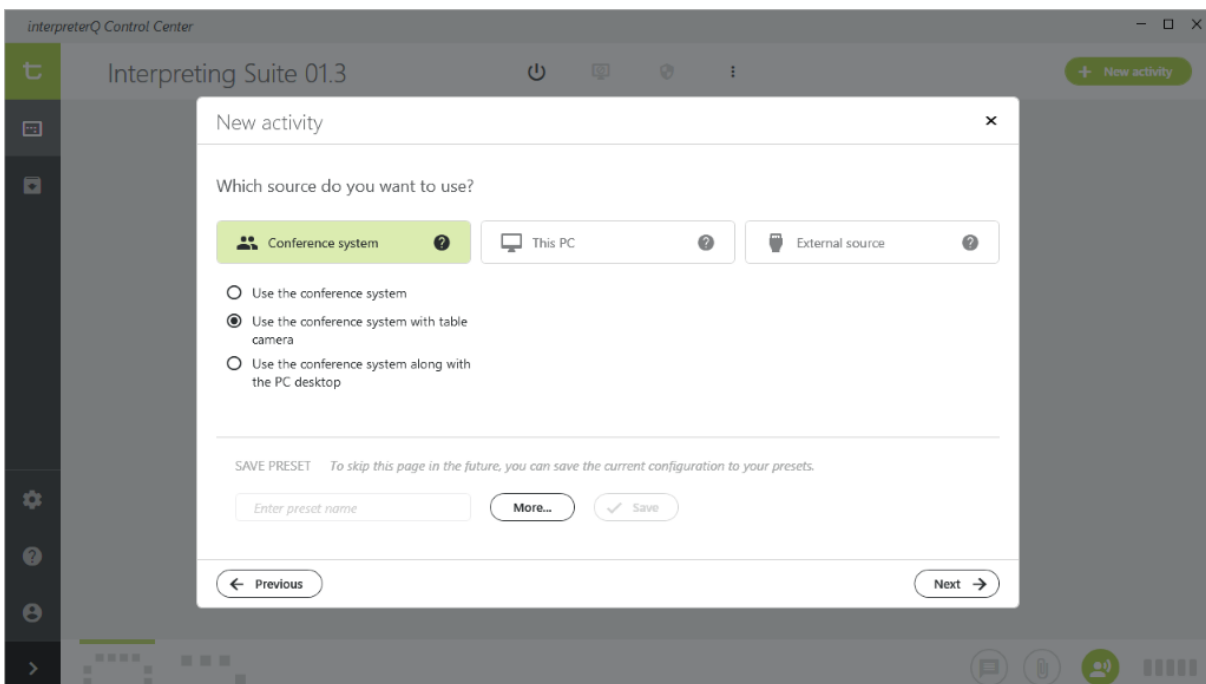
1 How to create activity presets in interpreterQ3

1 How to create activity presets in interpreterQ

When starting a new activity in interpreterQ, you can choose between reusing an existing preset or selecting all activity options from scratch:



First time the application is started, no presets will be available. However it is very easy to create your own presets for later reuse. The first screen after clicking the “Start from scratch” button lets you choose the type of speech source to use:



Note: for more info about the different available source types, see the manual “How to use speeches in interpreterQ”.

This same screen allows you to store your selection as a preset. To do so enter a preset name and click the “Save” button:

New activity

Which source do you want to use?

Conference system ? This PC ? External source ?

Broadcast the desktop of this PC

Broadcast the sound of this PC

Play a file

Send a file for the interpreters to work with individually


SAVE PRESET *To skip this page in the future, you can save the current configuration to your presets.*


Self study More... Save ←

← Previous Next →

You can easily check the stored preset by clicking the “Previous” button: a large “Preset” button has been added to the activity selection screen. Optionally you can finetune some preset options by clicking the “More...” button:

Preset properties

Select an embedded icon... : 

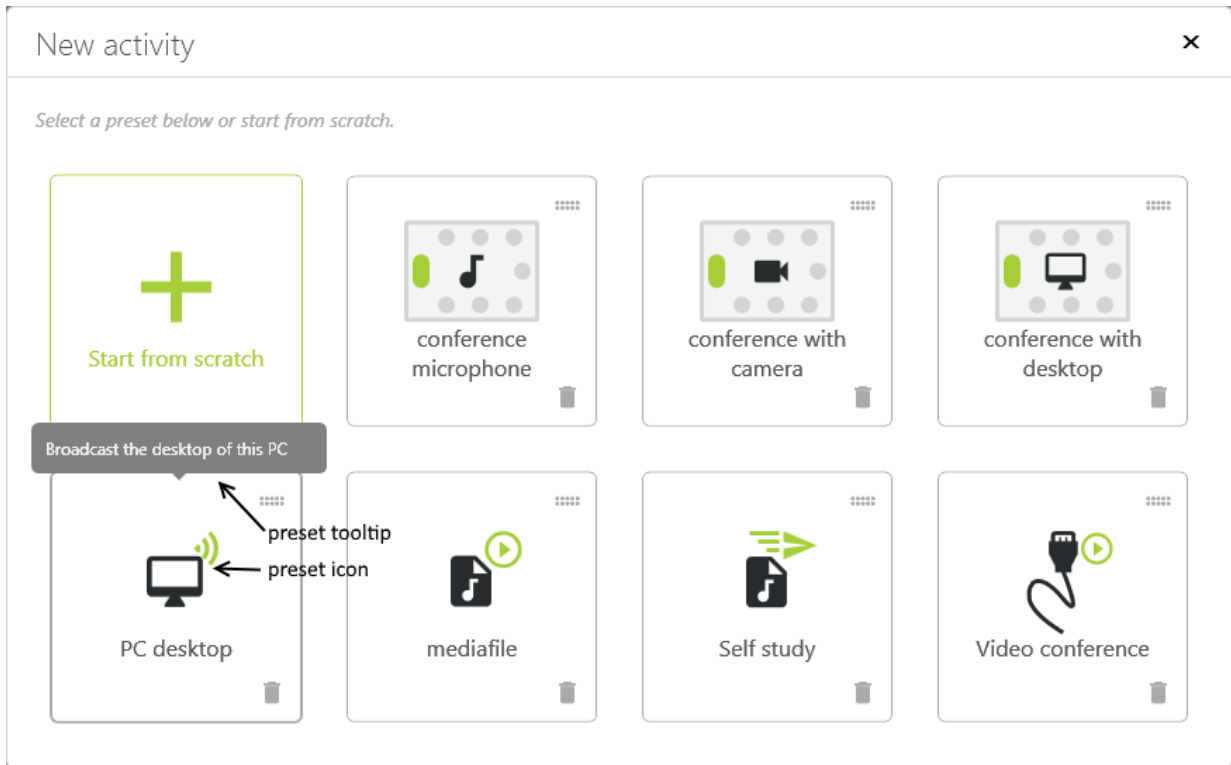
... or drop an external icon file here : 
(.png, .jpg, .gif, .ico, ... Preferrably 64x64 px)

Show following description when hovering over the preset button :

Broadcast the desktop of this PC

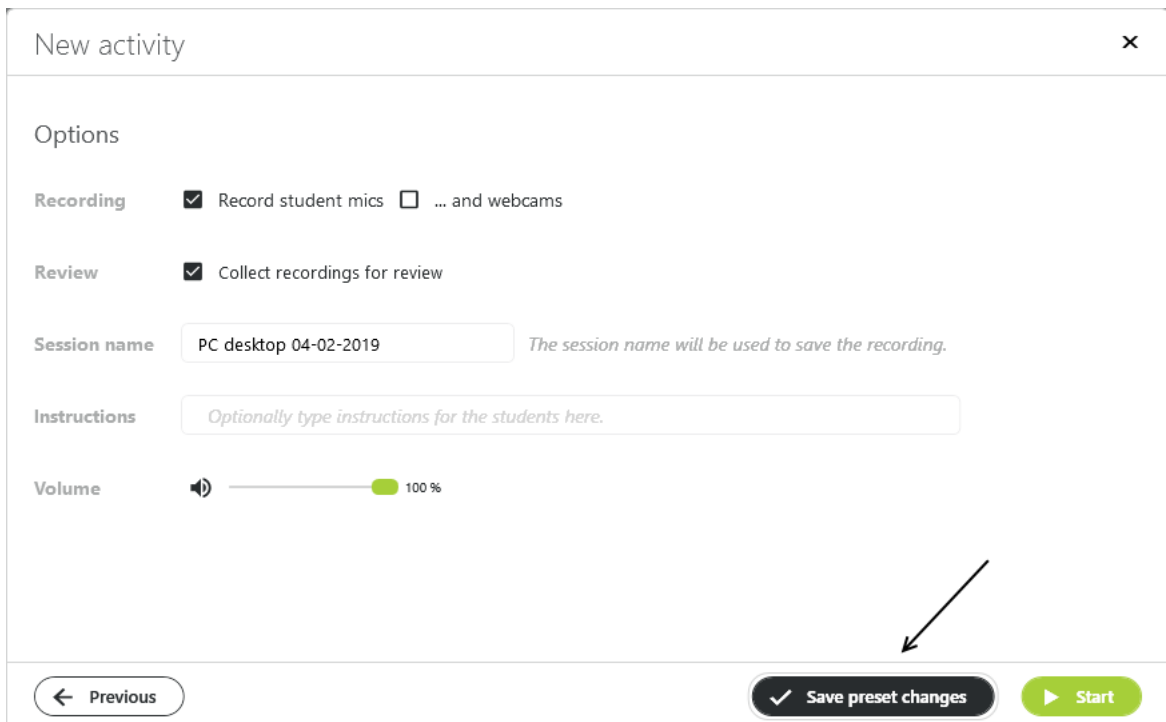
Cancel Continue

Here you can choose a suitable icon for the “Preset” button. You can even use your own icons when you have some available on the teacher PC. You can also specify the text which will be shown when hovering over the “Preset” button:



Although the preset names in the example above directly reference the used source type, you are free to choose any preset name, for instance linked to a certain type of course or exercise. All presets are stored as your personal preference, they are linked to your Windows account. When a common Windows account is used on the teacher PC for all teachers, also the predefined activity presets will be shared with all teachers.

Once you have defined a preset, you can also store your option preferences of the second wizard screen for that preset:



Clicking the “Save preset changes” button in the screenshot above for instance will remember that with this preset you always want to record student voices and collect the recordings for review. Of course at any time you can untick the “Record” checkbox to do no recording this time, without saving this modified setting in the preset.