

Televic Education

How to remotely control microphones and PCs using interpreterQ



interpreterQ
Reliable interaction.

televic
education

Table of contents

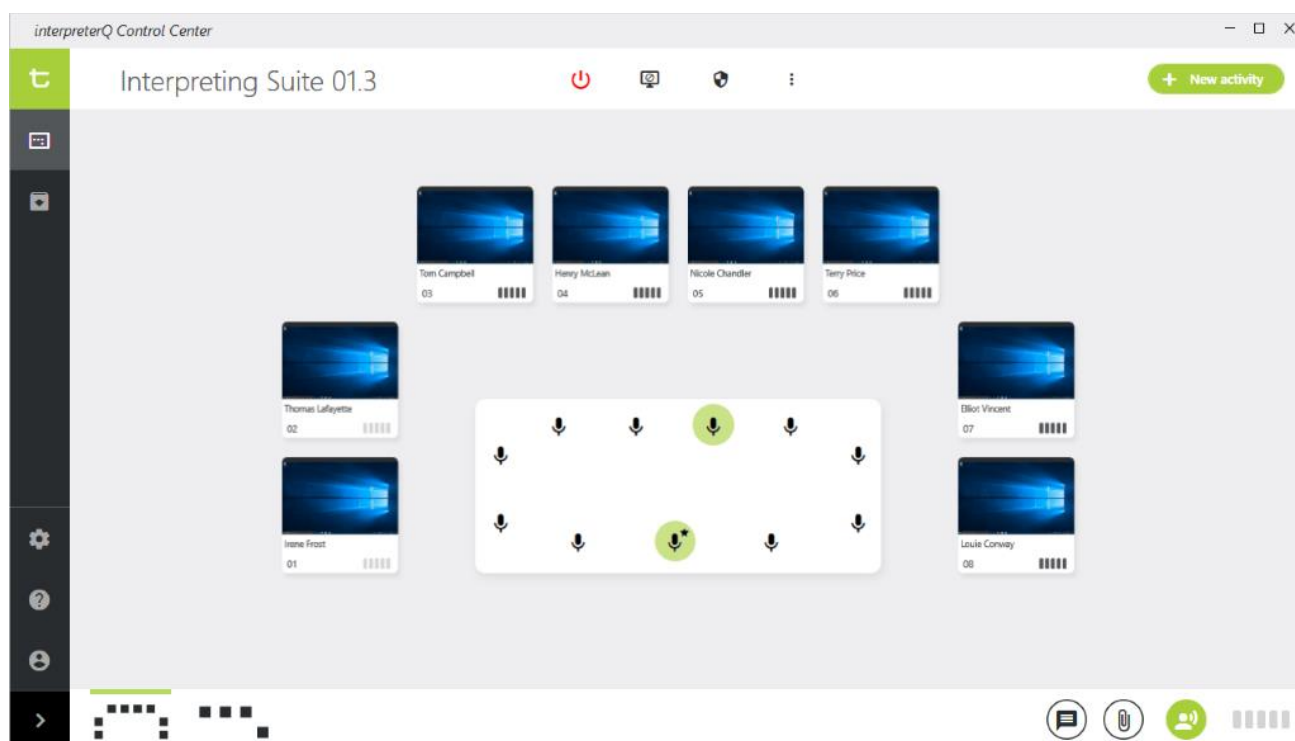
- Table of contents2
- How to remotely control microphones and PCs using interpreterQ.....3
 - 1.1 Controlling the delegate and interpreter microphones 3
 - 1.2 Controlling the booth PCs 4
 - 1.3 Sending files to the booth PCs 5
 - 1.4 Blank screen and restricted mode 5

How to remotely control microphones and PCs using interpreterQ

1.1 Controlling the delegate and interpreter microphones

If your interpreter training facility contains a conference table with multiple delegate microphones, you can remotely control those microphones with Interpreter Control Center.

To do so, your administrator will have added a conference table representation to the classroom view of Interpreter Control Center:

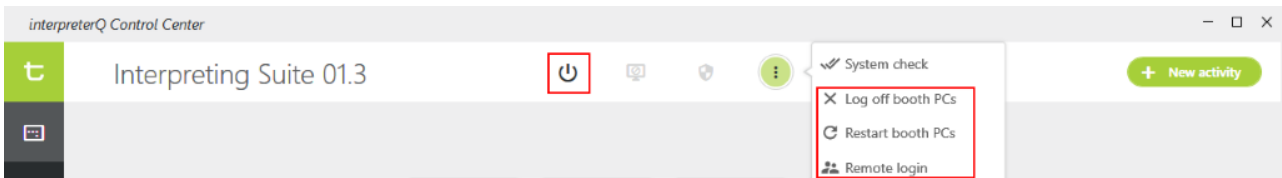


Controlling any of the delegate microphones is as easy as clicking on the microphone icon on the table representation.

Also the interpreter desk microphones can be remotely controlled. Just click the level indicator in the lower right corner of the booth representation. In the screenshot above, you can see that the microphones of booth 1 and 2 are not activated: the level indicators are grayed out. Click on this indicator and it will turn black, which means that the microphone in the booth is switched on.

1.2 Controlling the booth PCs

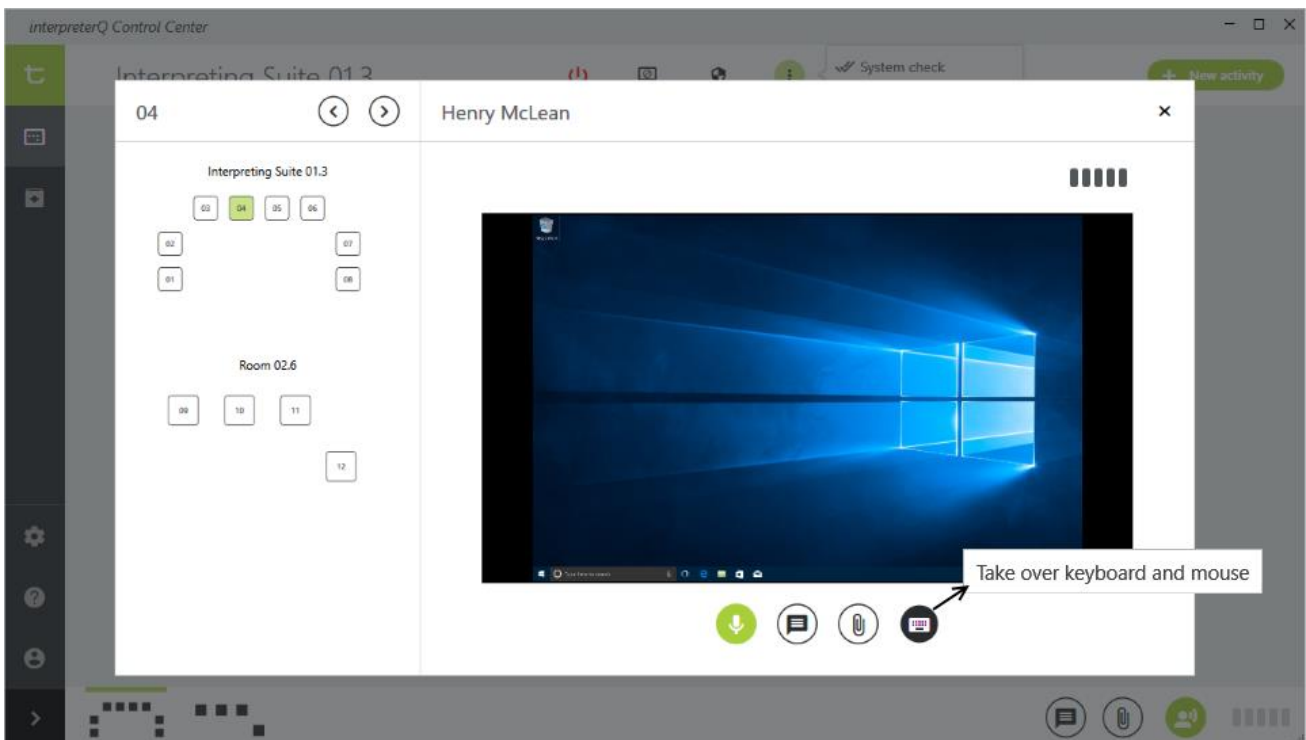
There are a number of options for remotely controlling the booth PCs. You can switch on or off all PCs through the “Power” button at the top of the Interpreter Control Center screen:



At the end of the lesson you can log off all Windows sessions on the student PCs, or completely restart the PCs.

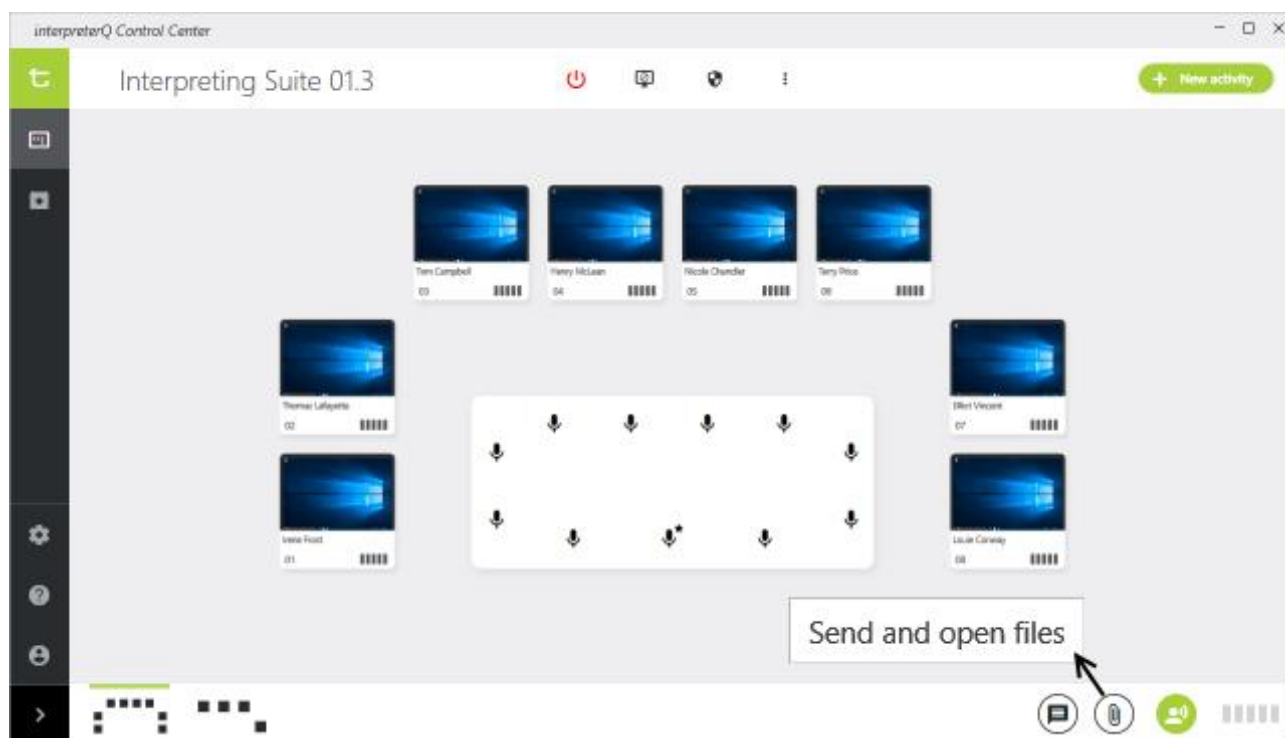
When necessary (this will mostly be for administration tasks) you can remotely log in on all student PCs in order to allow remote access to the computers.

Indeed, as soon as you have logged in on the booth computers, they will be remotely accessible from the teacher PC: click a booth in order to open the booth detail screen, and click the keyboard icon to enable keyboard/mouse sharing. From that moment on, you can remotely control the PC, launch or close applications, access the file system, and so on.



1.3 Sending files to the booth PCs

Prior to starting an interpretation exercise, you might want to send an accompanying document to the booth PCs. This could be an instruction document, a text file containing vocabulary relevant to the speech content, maybe even a written copy of the speech itself ... Use the “Send and open files” button in the lower right corner of the Interpreter Control Center interface:



Indeed, this button will not only send the file to the booth PCs, but will also open it for the students, just like if the student would double click on the file in Windows Explorer. Of course this means that the booth PC needs to have an application installed which can handle the received file. If you send a PowerPoint presentation, the PCs will need to have at least a PowerPoint viewer application installed.

You will notice the same “Send and open files” button in the booth detail view, which is opened after clicking a booth in the classroom view. This button will send the selected file only to the current booth, instead of sending it to all booth PCs.

1.4 Blank screen and restricted mode



There may be moments during class where you want the full attention of all students, and do not want them to be distracted by anything running on the booth PCs. For this Interpreter Control Center has a “blank screen” button, which blanks out all booth PC screens and forces the students to move their attention to what you have to say.

The “Restricted mode” button completely clears the desktop of all booth PCs. You can still stream speeches to the PCs, their video is still shown, but apart from that the students cannot access any resource on the PC. This creates a suitable environment for examinations.

Note: you can read all details about this in the manual “How to use interpreterQ for examinations”.